

TECHNICAL SPECIFICATIONS

Country of Origin:	New Zealand	Pile Weight:	1360.00g/m ² (40oz)
Colours:	8 Standard	Backing:	Jute
Yarn:	100% Wool	Installation Method:	Direct Stick
Surface Texture:	Needlepoint Patterned Loop Pile	Type:	Commercial Broadloom
Gauge:	62.9/10cm (1/16th Gauge)	Roll Width:	3.66
Total Product Thickness:	8 (+/- 1.0)mm	Pattern Repeat:	6cm (w) x 6cm (l)
Pile Height:	5 (+/- 1.0)mm		

PERFORMANCE

Anti-Static:	(AATCC 134) <3.5KV at 21°C & 20% Relative Humidity
Flammability:	Meets the requirements of NCC Spec. C1.10 relating to fire hazard properties for flooring in Class 2-9 buildings (including health and aged care buildings)~
Colourfast to light:	(ISO 105-B-02-1994) 5-6
Light Reflectance:	Available on Request
Stain Resistance:	Natural Wool Fibre Stain Resistance
ACCS Rating:	Residential Extra Heavy Duty & Stairs - 6 Star, Contract Heavy Duty - 3 Star
Contract Guarantee:	7 Year Contract Guarantee Available on Request*
Smoke Value:	80% minutes (Conventionally Laid)

SUSTAINABILITY

PVC Minimisation:	PVC Free
Indoor Air Quality:	Green Building Council Compliant for VOC emission rate limits
Product Transparency:	Declare Red List Free
Green Star:	Environmental Certification Scheme (ECS). Level 4 Maximum Points - Certificate #22061
Accreditation:	Manufactured under a quality and environmental system certified and complying with ISO 9001 and ISO 14001 by an accredited certification body.



Declare.



Green Building Council Australia
Member



535
SHORELINE



720
VENEER



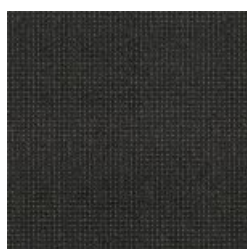
740
SILTSTONE



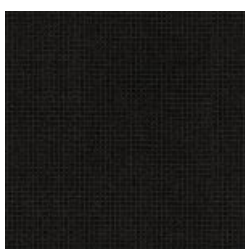
755
BOULDER



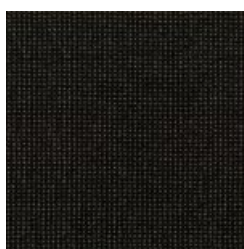
765
FACADE



780
MAGNETITE



785
CAMOUFLAGE



794
CALDERA

Specifications and colourations are subject to manufacturing tolerances. As part of the GH Commercial continuous improvement program, GH Commercial reserves the right to change the specifications of or delete colours of this product without notice. While all care is taken, product images may vary in colour due to possible printing process variations. Images do not seek to duplicate the exact visual appearance, but serve merely as a guide or point of reference.

All GH Commercial carpets must be installed in accordance with the latest AS2455 and any relevant GH Commercial Installation Instructions. ~Test results and certificates are available on request. *This guarantee is in addition to any rights consumers may have under Australian consumer laws. Terms and conditions apply - for full information in respect to the scope of the guarantee, please contact your GH Commercial Account Manager or our Head Office.